



House1

Oil Per Board: 40 uL Oil Pattern Distance: 38 Feet Volume Oil Total: 17.24 mL Total Boards Crossed: 431 Boards

Forward Oil Total: 10.56 mL
Forward Boards Crossed: 264 Boards

Reverse Oil Total: 6.68 mL
Reverse Boards Crossed: 167 Boards

Notes

	Start	Stop	Loads	Speed	Crossed	Start	End	Feet	T.Oil
1	2L	2R	2	10	74	0.0	1.4	1.4	2960
2	9L	9R	2	10	46	1.4	4.2	2.8	1840
3	10L	10R	2	10	42	4.2	7.0	2.8	1680
4	11L	11R	2	10	38	7.0	9.8	2.8	1520
5	12L	12R	2	10	34	9.8	12.6	2.8	1360
6	13L	13R	2	10	30	12.6	15.4	2.8	1200
7	2L	2R	0	18	0	15.4	28.0	12.6	0
8	2L	2R	0	30	0	28.0	38.0	10.0	0

	Start	Stop	Loads	Speed	Crossed	Start	End	Feet	T.Oil
1	2L	2R	0	30	0	38.0	30.0	-8.0	0
2	13L	13R	2	22	30	30.0	23.8	-6.2	1200
3	12L	12R	2	22	34	23.8	17.6	-6.2	1360
4	11L	11R	2	22	38	17.6	11.4	-6.2	1520
5	10L	10R	2	18	42	11.4	6.3	-5.1	1680
6	9L	9R	1	14	23	6.3	4.4	-1.9	920
7	2L	2R	0	10	0	4.4	0.0	-4.4	0

Conditioner:
Type In or Select One

TransferType:
Type In or Select One

Forward



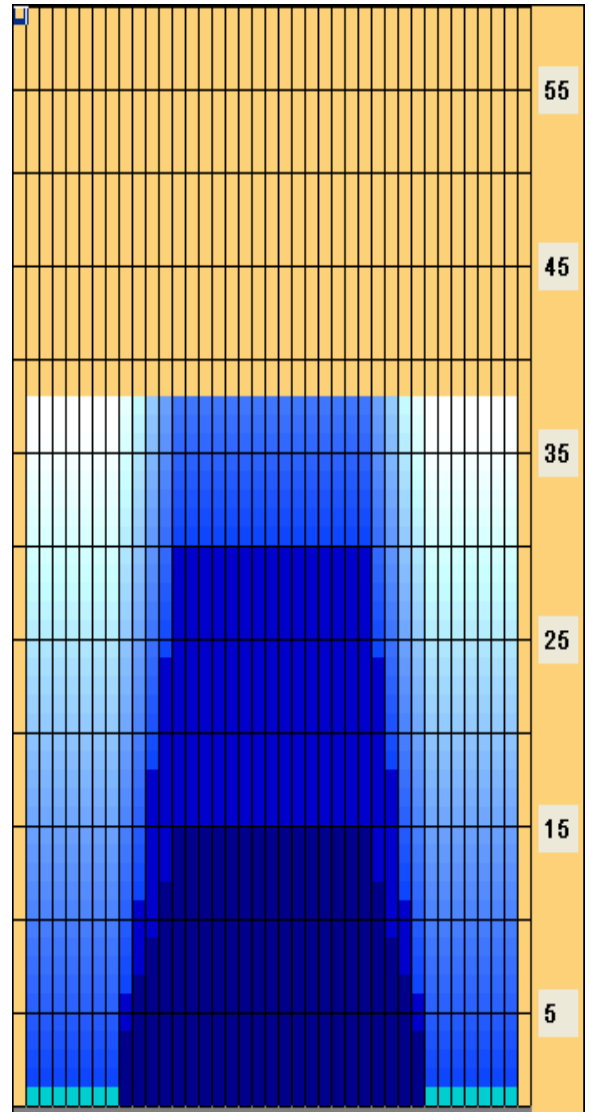
Reverse



Combined



Buff



Arrow Zone Ratios

Item	2-5L:16L-20	6-10L:16-20	11-15L:16L-20	16L-20:20-16R	16L-20:20-16R	20-16R:15-11R	20-16R:10-6R	20-16R:5-2R
ul Arrow	80	160	744	840	840	744	160	80
Zone Ratio	10.5	5.25	1.13	1	1	1.13	5.25	10.5

Track Zone Ratios

Item	3L-7L:18L-18R	8L-12L:18L-18R	13L-17L:18L-18R	18L-18R:17R-13R	18L-18R:12R-8R	18L-18R:7R-3R
Description	Outside Track:Middle	Middle Track:Middle	Inside Track:Middle	Middle: Inside Track	Middle:Middle Track	Middle:Outside Track
Track Zone Ratio	10.5	2.28	1	1	2.28	10.5

